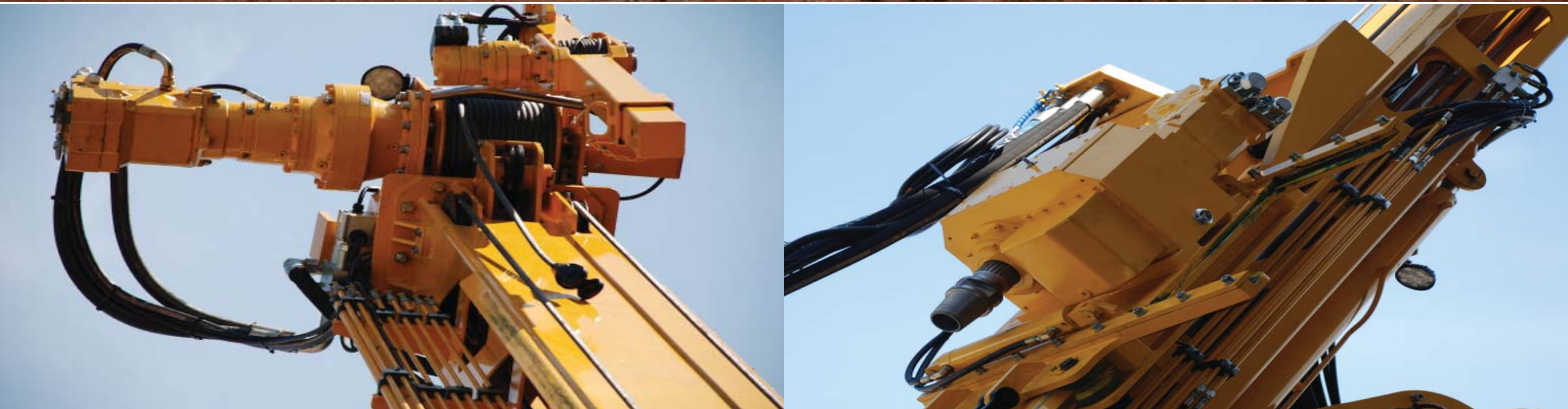


Exploration Drill Rigs Pty Ltd Technical Data XDR 800 Multi Purpose Drill Rig

KEY ELEMENTS

- 2 Speed Floating Hollow Spindle Drill Head
- Drill Head travel of 7 meters
- 1000 meters H
- Mast Length 10.3 meters
- Heavy Duty 2 meter mast dump
- Engine-Cummins Diesel QSB 6.7 Ltr
- FMC John Bean L09-18HD-BCD





Exploration Drill Rigs Pty Ltd

Exploration Drill Rigs (XDR) drill rig platforms have evolved over 20 years of rugged field testing and evaluation in the Australian outback. The new XDR 800 Multi-Purpose drill rig is a culmination of this experience, utilising tried and proven components from world recognised manufacturers to deliver yet another hard working drill to complement the XDR range.

Offering 14,400KG of pullback (variable) with XDR's new splined floating spindle rotation head, this drill is very capable of undertaking 1000 meter H or 1600 meter N core hole programs which will meet the majority of mining company drilling programs. A digital on-board PLC monitors key drilling functions such as rotation speed, water pump flow, while also managing core functions' such as main winch limiter to prevent winch overwind. All XDR drills incorporate a high level of safety devices including rotation guarding to the table. This guarding also incorporates a rotation speed limiter when the safety cage is opened, only allowing partial rotation for drill rods to be made up or broken. Many other safety features are built into the drill including, power isolation, multiple emergency stops and hydraulic safety valving on key elements to assist in providing a safe working environment for our customers.

Key consumables and components incorporated in the 800 are readily available in Australia and world markets while stocks of proprietary items are always held at our 2 factories.

AUSTRALIAN AGENTS

Exploration Drill Rigs Pty Ltd

Distributors for Drill Rigs International
(previously trading as Hydco International)

Unit 3/ 636 Progress Road
Wacol, Brisbane QLD 4076
Ph +61 (0) 7 3271 6261
Fax +61 (0) 7 3271 6221

Contact Ian Pitcher Mob 0438 789 475
Email ian@xdr.com.au

Contact Ross Hutton Mob 0412 559 143
Email ross@xdr.com.au

www.xdr.com.au

Drill Rod/Core Barrel	Rod Size (mm)	Core Size (mm)	Hole Depth (metres)
B	55.6	46	2060
N	69.9	60.3	1630
H	88.9	77.8	1080

Base:	Fully welded structure – channel & RHS Four levelling jacks
Mast:	Square Hollow Section Mast Mast Length 10.3 metres Drill Head travel 7.5 metres Hydraulic Head Slide 16mm non rotating wire ropes with Hydraulic tensioning Hydraulic operated Tapered Foot Clamps
Feed:	Variable feed & pressure control Pull Back 14,400KG [Variable] Pull Down 9,200KG [Variable]
Dump Mast:	Heavy Duty 2 metre mast dump UHMWPE Slides
Drive Head:	2 Speed Floating Hollow Spindle Drill head Variable Speed Piston Motor Pressure Lubricated - (Gears Hardened & Ground) Speed and torque variable High Low 165 to 1000 RPM -1246Nm 170 to 250 RPM – 4980Nm
Main Winch:	Capacity - 10,000 kg single line pull 16mm non-rotating (35 X 7 Construction) Winch limiter & speed limiter Wire rope overrun cut out Planetary reduction gearbox, fail safe brake, complete with over centre valve
Wireline winch:	Capacity - 6mm non-rotating (18 X 7 Construction) 1400 meters Radial Piston Motor Planetary reduction gearbox complete with over centre valve
Pumps	1 x Main pump Kawasaki 140cc Pressure compensated load sensing 2 x Auxiliary Kawasaki pumps GPM High Pressure Gear Pump
Valves	AMCA - APV22 Proportional load sensing valve Sauer Danfoss Auxillary valves Operating Pressures 240 Bar (3,500 PSI)
Hydraulic Tank	600Ltr capacity



Filtration	Full flow filtration Pressure filtration Return line filtration All circuits 10 micron absolute
Oil Cooler	Hydac fan driven cooler, (combi cooler with Engine)
Control System	All rig functions & Gauges including water flow and pressures All engine controls - Shut down in panel 1 Emergency Stop (3 in total on rig)
Engine	Cummins Diesel QSB 6.7 Ltr Custom Pack 203 HP at 2,200 RPM
Water Pump	FMC John Bean L09-18HD-BCD Variable speed: Maximum 250lts/min @ 70 bar
Other Standard features	Guarding to table with rotation shutoff Guarding to all rotating items Two Pack paint system to Rig Rig safety rails including toe kicks Enclosed pulleys Drillers operating platform Rig Lighting Fold down ladder to deck 2 Stage main winch stop Rotation Speed Display Water Flow display

These specifications are based on theoretical engineering calculations. Actual capacity will depend on specific drilling conditions and materials. Drill Rigs International reserves the right to change or make modification to designs and specifications without prior notice or obligation.



Manufactured in INDIA by:-
HYDCO Engineering Private Limited



Survey no. 928/1 Near GEB Sub-station, Chhatral-Kadi Road, Chhatral, Gandhinagar,
Gujarat- 382729, INDIA, Telephone - 02764-233270/71
Contact : Rupesh J. Patel - Executive Director , Mobile # +917573048908
Email: rjp@hydcoengineering.com Web: www.hydcoengineering.com

Drill Rigs International Pte Ltd
27 General Macarthur Place, Redbank, QLD, 4301 Contact: Andrew Heseltine,
Business Development Manager Phone: 07 3381 5363 Fax: 07 3381 5365
Email: andrew@xdr.com.au. Web: www.xdr.com.au